

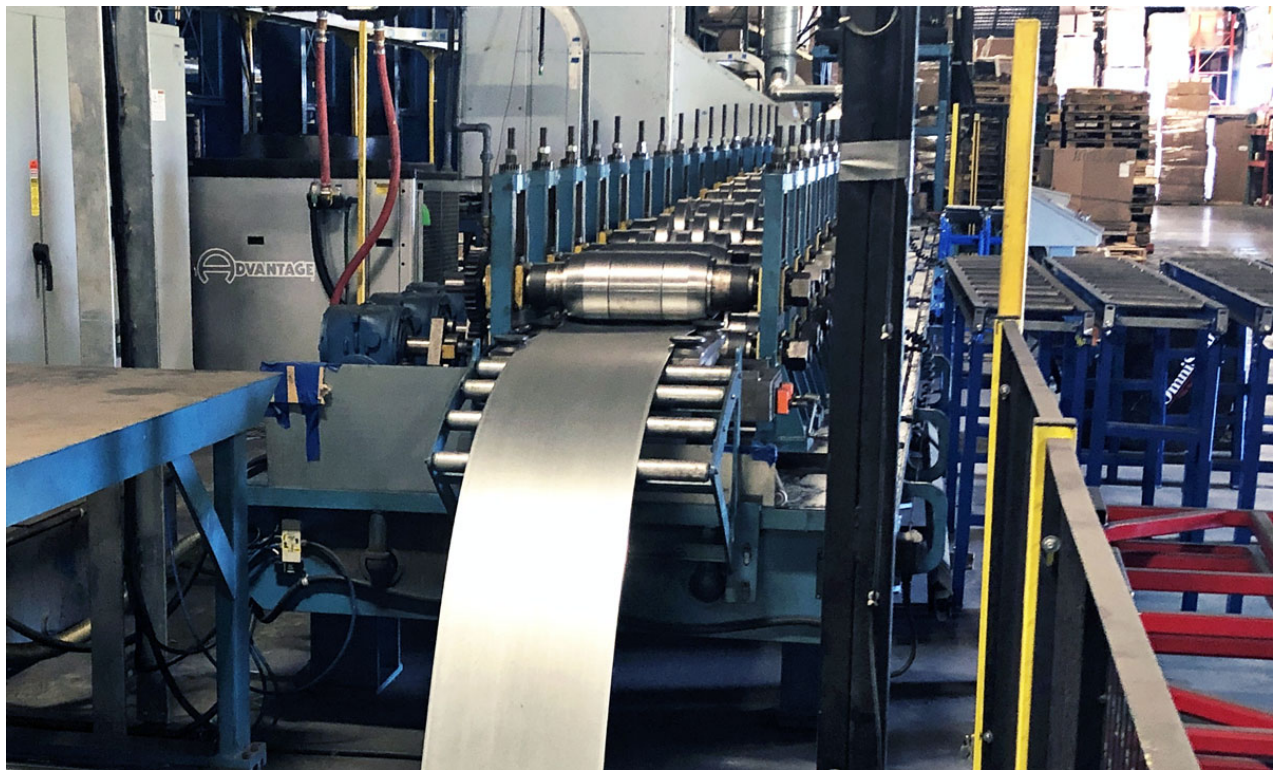


UNIVERSAL TUBE & ROLLFORM EQUIPMENT CORPORATION

International **New and Used** Metalworking Machinery Dealer

For Sale: SAMCO Unistrut Profile & 4" x 4" Form Square Combo Line

[Inventory](#) / [Rollformers](#) / [Stock #3723](#)



LINE SPECIFICATIONS:

- SAMCO "12 Gauge Strut Channels" Rollforming Line
- Inline High Frequency Welding for welded tube 4" x 4" x 3.5 mm thick
- Line Direction: Left to Right
- Speed: Variable up to 100 FPM (30 M/Min) depending on the punching pattern and part length(s)
- Top Speeds for part lengths 8 ft or longer

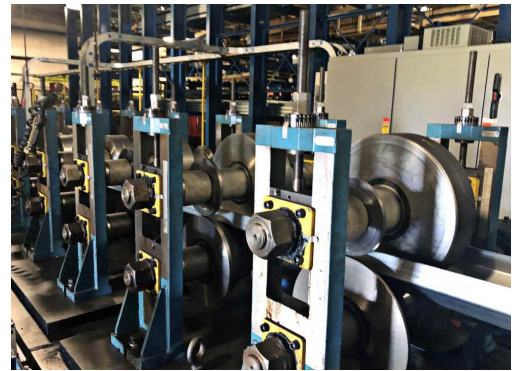


- Performance for welded tube 4" x 4" up to maximum 75 FPM

PRODUCTS:

Strut Dimensions:

- Web Width: 41 mm (1 5/8")
- Flange Height: 13/16" (21 mm), 1" (25 mm), 1 5/8" (41 mm), 2 1/4" (54 mm), 2 15/16" (75 mm), 3 1/4" (80 mm) and 3 15/16" (100 mm)
- Lip: 0.375" x 0.281" (9.5 mm x 7 mm) symmetrical
- Lengths: 10 ft minimum, 20 ft maximum



Welded Tube:

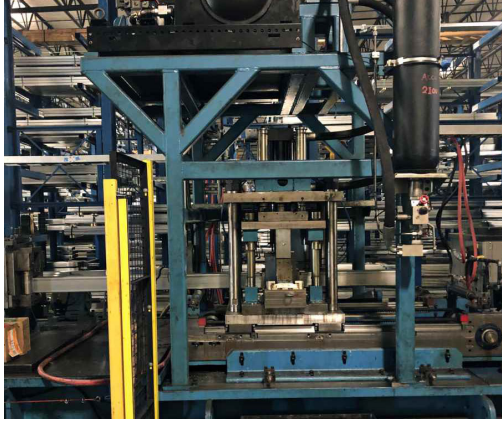
- 4" x 4"
- Material Thickness 3.5 mm
- Material POSMAC440
- Material Yield Strength: max. 72,000 psi
- Inline welding with up to 75 FPM
- Part will be pre-notch for cut-off
- Part Length: 25 ft 2"



EQUIPPED WITH:

Note: Detailed specifications for the following equipment is available on the [specifications page](#) for this line.

- 10,000 Lb. Double Uncoiler
- Peeler Table
- Powered Flattener
- Stock Material Sensor
- Coil Shear & End Welder
- Loop Control & Threading Table #1
- Servo Roll Feeder
- Mechanical Pre-Punch Press
- Pre-Punch Die
- Loop Control & Threading Table #2
- SAMCO Universal Drive Rafted Rollformer
- Roll Tooling Combo Set, All Strut Sizes
- Cut-Off Die & Inserts, Struts
- Pre-Punch For Cut-Off Die, Welded Tube



- Rafted Tops for Welded 4" x 4" Tube
- Roll Tooling Welded Tube 4" x 4"
- 100 KW Induction Welder w/Retraction for rollforming
- Cut-Off Die, Welded Tube 4" x 4"
- Hydraulic Flying Cut-Off Press
- Length Control System
- Vacuum Coolant Removal System
- Zinc Coating System & Integration
- Exit Conveyor/Slant Table & Scissor Lift
- 2 Light Curtains & Perimeter Safety
- Electrics, Integration & Controls



[Request Quote →](#)

More Rollformers For Sale:



[Inventory / Rollformers / #3246](#)

24 Stand x 1-1/2" RLM Duplex
Type Panel Rollformer

[Specifications →](#)



[Inventory / Rollformers / #3599](#)

20 Stand x 3-1/2" x 42" ASC
Rollformer

[Specifications →](#)



[Inventory / Rollformers / #3726](#)

16 Stand x 3" x 50" ASC Rafted
Rollform Line

[Specifications →](#)



[Inventory / Rollformers / #3138](#)

16 Stand x 3" x 48" ASC Rafted
Rollformer

[Specifications →](#)

[Inventory / Rollformers / #2709](#)

16 Stand x 2-1/2" x 24"
BRADBURY Rollformer

[Specifications →](#)



[Specifications →](#)



[Inventory / Rollformers / #3539](#)

**16 Stand x 2" x 18" TISHKEN
Center Cut Rollformer**

[Specifications →](#)



[Inventory / Rollformers / #3556](#)

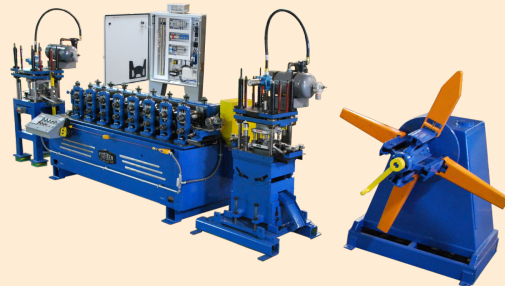
**16 Stand x 2" x 18" TISHKEN
Center Cut Rollformer**

[Specifications →](#)

Reconditioning, Rebuilding & Line Integration Services

Universal can recondition your current machinery to the most exact specifications, extending the life of your equipment and increasing the value of your dollar.

[Read More →](#)



[Inventory / Rollformers / #2860](#)

**16 Stand x 1-3/4" x 10" TISHKEN
#16HMW 1-3/4 Rollformer**



[Specifications →](#)



[Inventory / Rollformers / #3632](#)

16 Stand x 1-1/2" x 10" ARDCOR
Rollformer

[Specifications →](#)



[Inventory / Rollformers / #3252](#)

15 Stand x 2-3/4" x 27" HAYES
Ad Lok Panel Rollformer

[Specifications →](#)



[Inventory / Rollformers / 2614](#)

14 Stand x 2-1/2" x 42"
BRADBURY #415RF Rollformer

[Specifications →](#)



[Inventory / Rollformers / 3576](#)

14 Stand x 2-1/2" x 38" B&K
Rollformer

[Specifications →](#)



[Inventory / Rollformers / 2335](#)

14 Stand x 1-1/2" T&H Triplex Window Frame Rollform Line

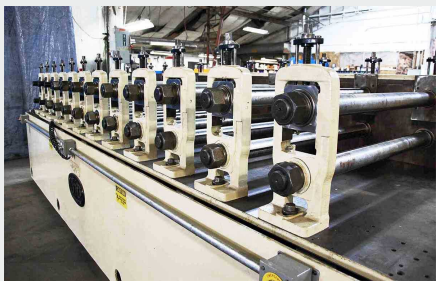
[Specifications →](#)



[Inventory / Rollformers / 3059](#)

12 Stand x 3" x 36" ASC #CAS-4-36-12 Rollformer

[Specifications →](#)



[Inventory / Rollformers / 2725](#)

12 Stand x 2-1/2" x 34" TISHKEN Roll Former

[Specifications →](#)



[Inventory / Rollformers / 3545](#)

12 Stand x 2" x 15" TISHKEN #12MW2 Rollformer

[Specifications →](#)



[Inventory / Rollformers / 2910](#)

10 Stand x 3" x 54" BRADBURY M3 Ribbed Panel Rollform Line

[Specifications →](#)



[Inventory / Rollformers / 3517](#)

10 Stand x 1-1/2" x 6" TISHKEN
#10-HMW-1-1/2 Rollformer

[Specifications →](#)



[Inventory / Rollformers / 2781](#)

10 Stand x 1-3/8" x 12"
LOCKFORMER #L-810 Rollformer

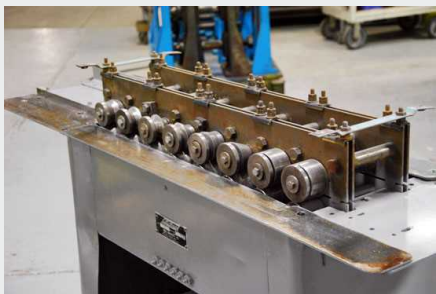
[Specifications →](#)



[Inventory / Rollformers / #3606](#)

8 Stand x 4.3" VOEST ALPINE
Rollformer

[Specifications →](#)



[Inventory / Rollformers / 2163](#)

8 Stand x 1" x 4" ENGEL #BLF-
BLN Rollformer

[Specifications →](#)

[View All Rollformers →](#)

Sell Your Industrial Machinery

Various Options:

- Cash Purchase
 - Auction
- Consignment
- Trade-In

Always Buying:

- Tube & Pipe Machinery
 - Rollform Machinery
 - Coil Handling Machinery
- [Sell Your Machinery](#) →



**Machine
Inventory**



**Machine
Reconditioning**



**Controls &
Drive Systems**



**Length
Control Systems**



**Sell Your
Machinery**

Tube Mills | Rollformers | Tube Benders | Tube Cut-Offs | Re-Cuts | Deburring |
Tube End Formers | Tube Straighteners | Swagers | Welders | Accumulators |
Cut-Off Presses | Flatteners | Levelers | Slitting Lines



Universal Tube & Rollform Equipment Corporation
Universal Controls Group

sales@utubeonline.com | www.utubeonline.com